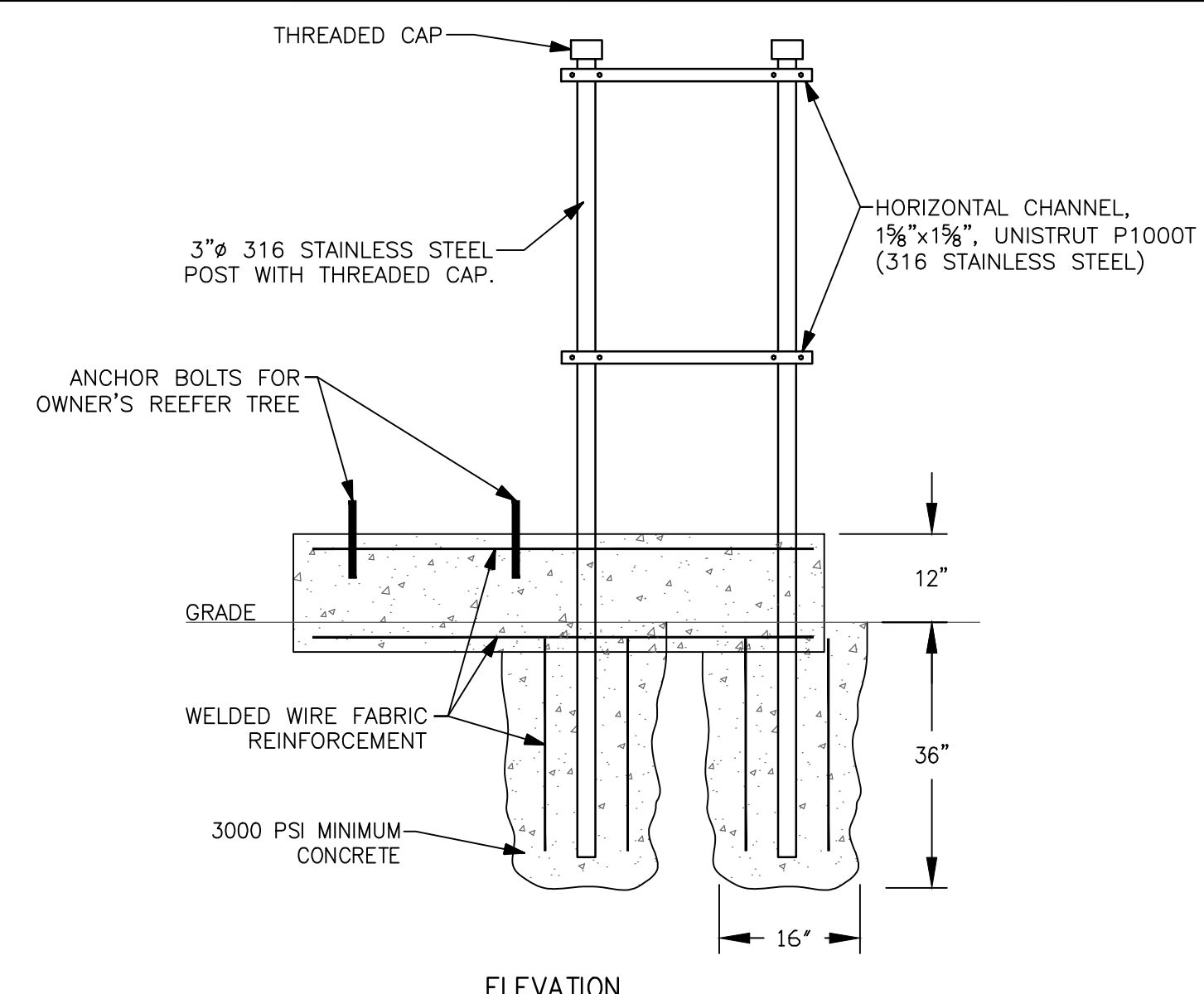
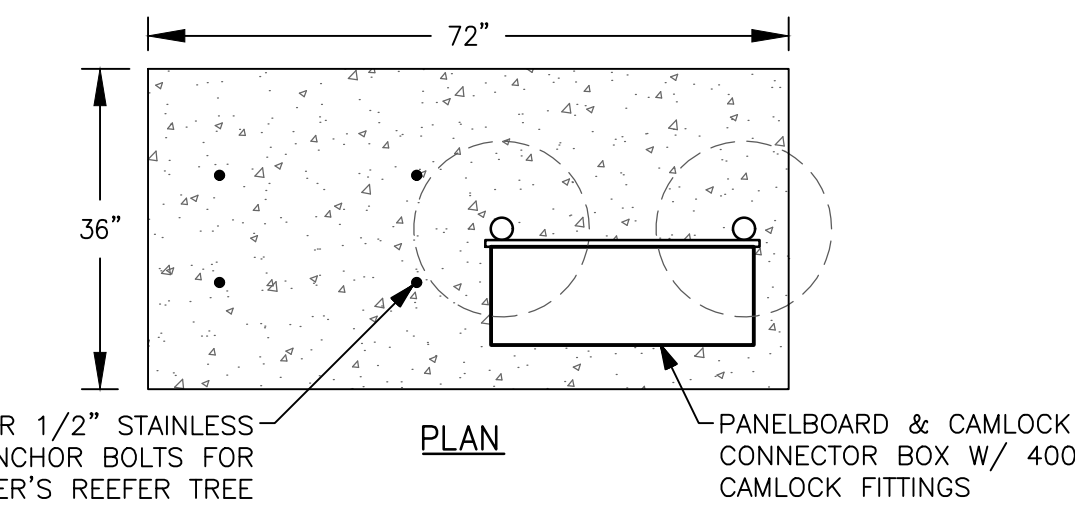


ELECTRICAL NOTES

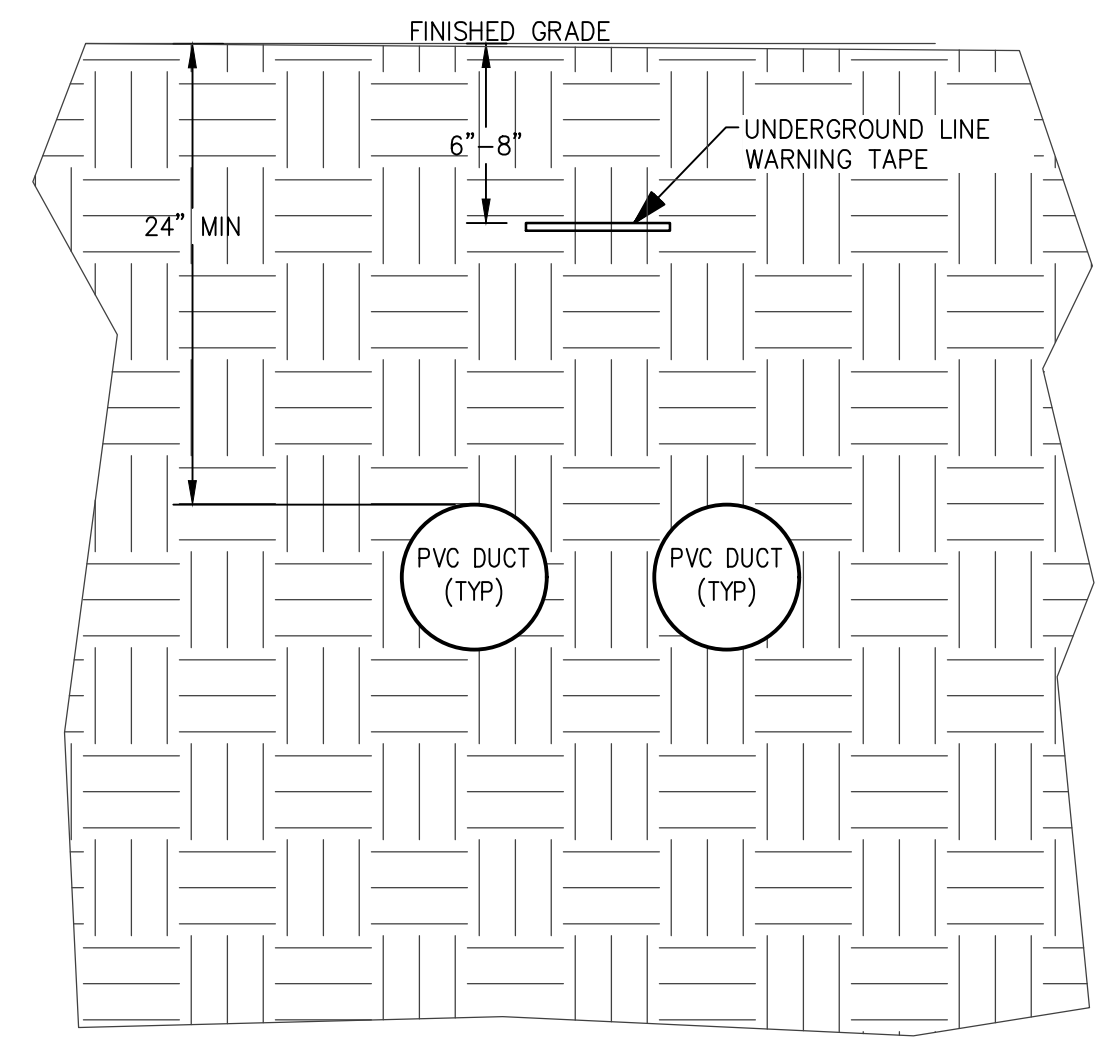
- ELECTRICAL WORK SHALL BE PERFORMED IN ACCORDANCE WITH THE NATIONAL ELECTRICAL CODE AND REQUIREMENTS OF THE LOCAL AUTHORITY HAVING JURISDICTION.
- THE ELECTRICAL CONTRACTOR AND ANY OF HIS SUBCONTRACTORS SHALL VISIT THE PROJECT SITE TO WITNESS EXISTING CONDITIONS AND BECOME FAMILIAR WITH THE SCOPE OF THE WORK REQUIRED PRIOR TO SUBMITTING PROPOSALS. WORK REQUIRED BY EXISTING JOB CONDITIONS NOT INDICATED ON DRAWINGS SHALL BE INCLUDED IN THE PROPOSALS.
- THE DRAWINGS AND SPECIFICATIONS ARE INTENDED TO RESULT IN THE PRODUCTION OF A COMPLETE AND FUNCTIONAL ELECTRICAL SYSTEM. THE ELECTRICAL CONTRACTOR SHALL PROVIDE ALL MATERIAL, LABOR, EQUIPMENT, AND OTHER SERVICES AS NECESSARY TO COMPLETE THE WORK.
- DISCREPANCIES IN THE DRAWINGS AND SPECIFICATIONS THAT WILL AFFECT THE WORK SHALL BE BROUGHT TO THE ATTENTION OF THE ENGINEER AND OWNER PRIOR TO SUBMITTING PROPOSALS.
- UNLESS NOTED OTHERWISE, ALL MATERIALS AND EQUIPMENT SHALL BE NEW.
- CUTTING AND PATCHING TO INSTALL DEVICES AND EQUIPMENT SHALL BE PERFORMED WITH FINISHES RESTORED TO THEIR ORIGINAL CONDITION. SUCH WORK SHALL BE COMPLETED TO A DEGREE THAT IS ACCEPTABLE TO THE ENGINEER AND OWNER.
- PROVIDE NATIONAL ELECTRICAL CODE REQUIRED CLEARANCES FOR ALL ELECTRICAL EQUIPMENT. COORDINATE RESOLUTION OF CONFLICTS WITH OTHER TRADES.
- WHERE WORKING AT FACILITIES OR STRUCTURES; PROTECT AND MAINTAIN IN OPERATION EXISTING ELECTRICAL SYSTEMS, ETC. IF SHUTDOWNS ARE REQUIRED, NOTIFY THE OWNER FOR COORDINATION WELL IN ADVANCE OF ANY SYSTEM SHUTDOWN. WHERE AN OUTAGE OF EXTENDED DURATION IS NOT ACCEPTABLE TO THE OWNER, PROVIDE TEMPORARY CONNECTIONS AS REQUIRED TO MAINTAIN SERVICE.
- EQUIPMENT FOR THIS PROJECT IS NOT LOCATED IN THE 100 YEAR FLOOD ZONE.



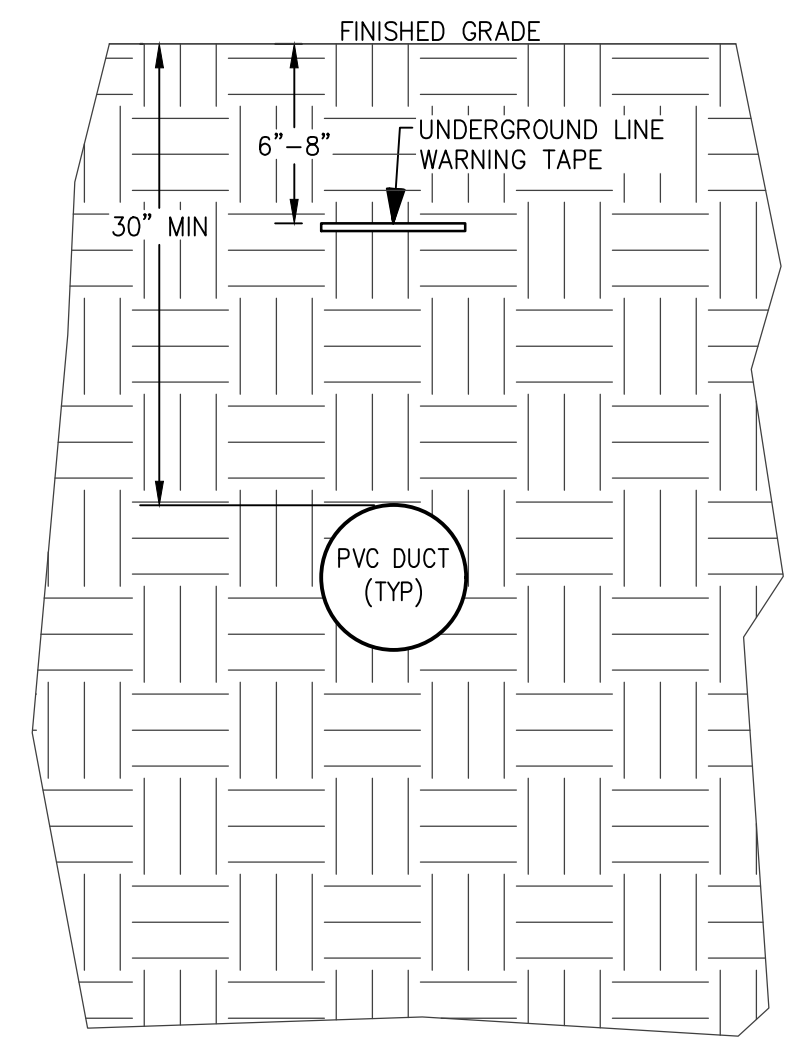
(A) DISCONNECT POST/RACK DETAIL
NO SCALE



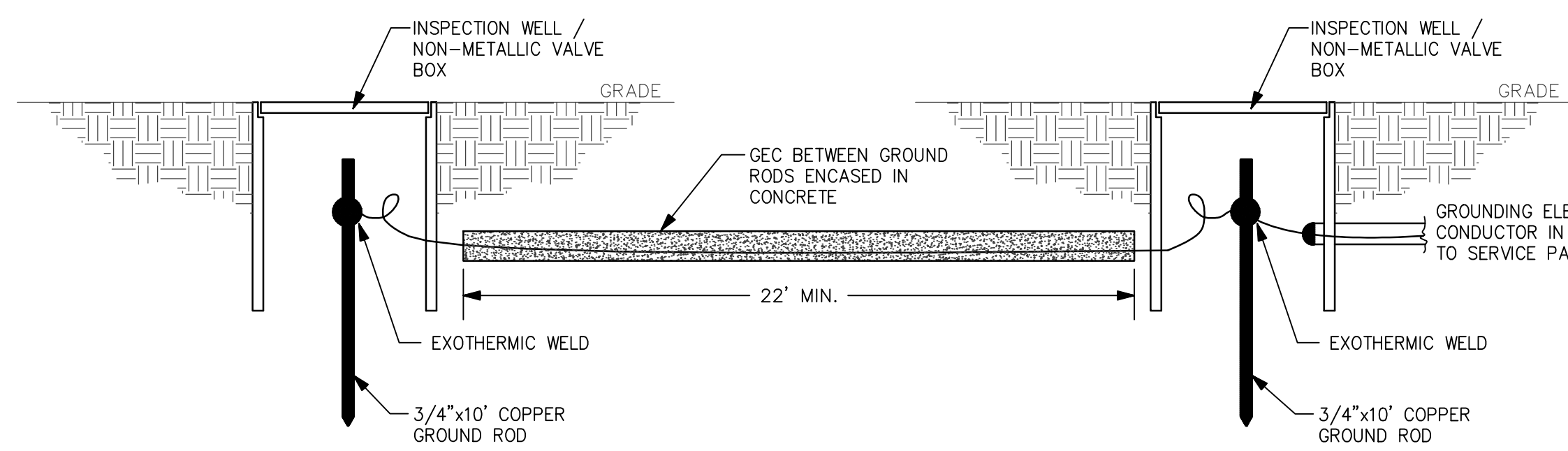
- NOTES**
- USE 3/8" STAINLESS STEEL HARDWARE FOR CONNECTING CHANNELS & MOUNTING EQUIPMENT.
 - PROVIDE ADDITIONAL CHANNEL(S) WHERE REQUIRED TO ALIGN WITH EQUIPMENT MOUNTING HOLES.



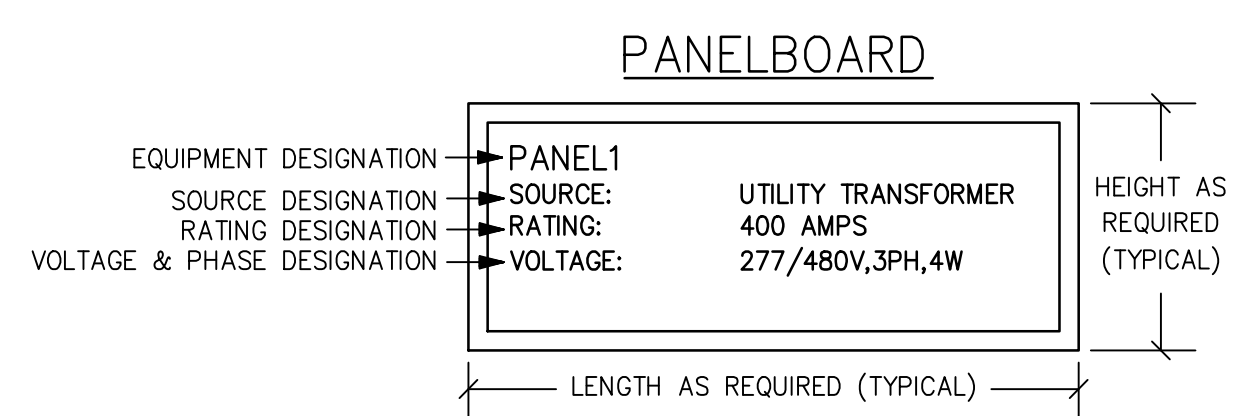
(B) DUCT BANKS
NO SCALE



(C) PIPE BOLLARD DETAIL
NO SCALE



(D) GROUND RODS & INSPECTIONS WELL
NO SCALE



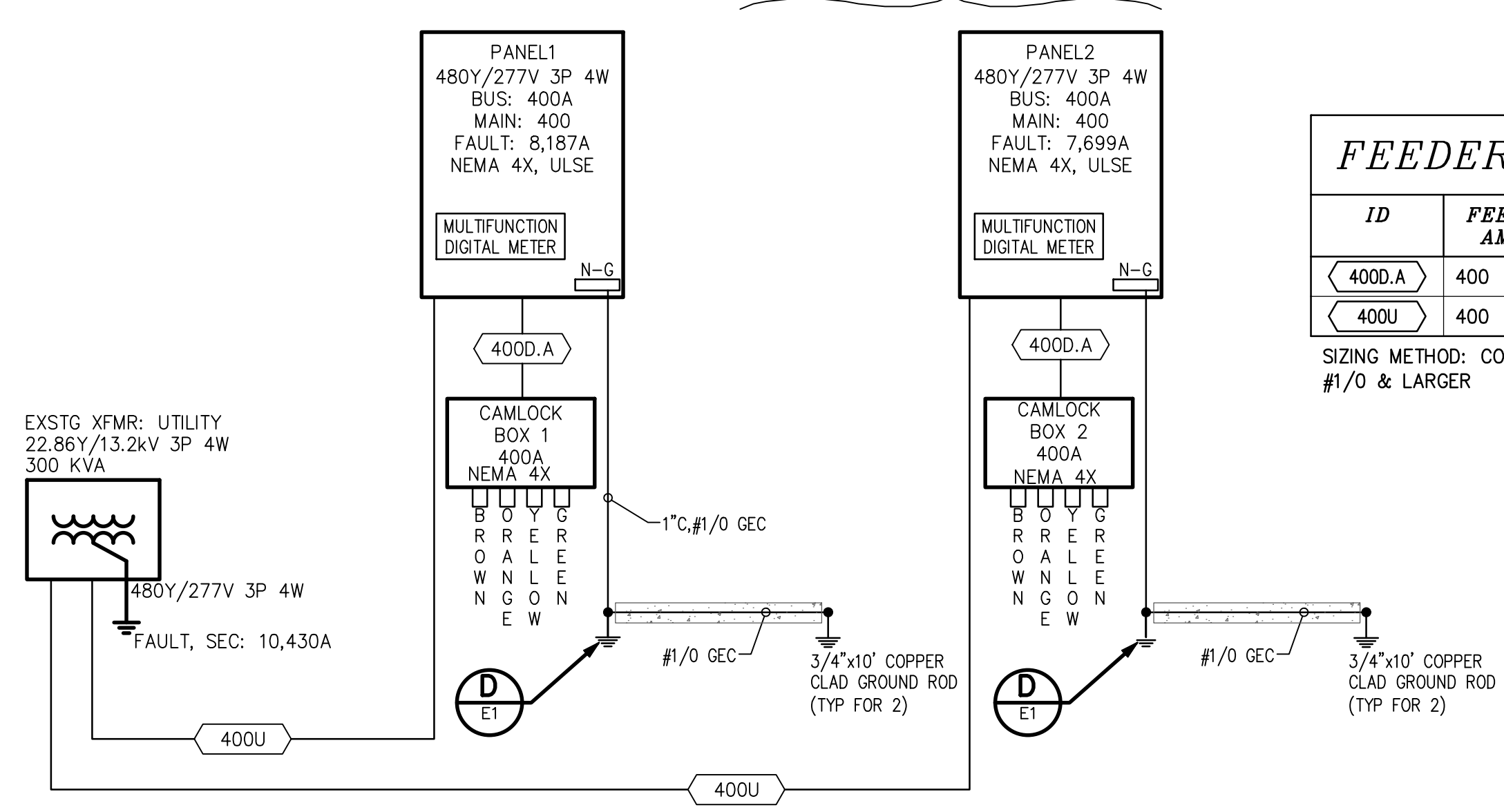
- NOTES:**
- ENGRAVED PLASTIC FOR NAMEPLATE.
 - HIGH PERFORMANCE, DOUBLE COATED TAPE WITH ADHESIVE TO ATTACH LABELS. DESIGN BASIS: 3M #06383 OR APPROVED EQUIVALENT.
 - 1/4" ENGRAVED LETTERS.

(E) TYPICAL NAMEPLATE DETAILS
NO SCALE

ABBREVIATIONS

- AFG ABOVE FINISHED GRADE
- AIC AMPS INTERRUPTING CAPABILITY
- C CONDUIT
- CU COPPER
- G EQUIPMENT GROUND
- GEC GROUNDING ELECTRODE CONDUCTOR
- K KILO (THOUSAND)
- MFR MANUFACTURER
- N/A NOT APPLICABLE
- NEC NATIONAL ELECTRICAL CODE
- NEMA NATIONAL ELECTRICAL MANUFACTURERS ASSOC.
- P PHASE OR POLE
- PH PHASE
- PVC POLYVINYL CHLORIDE
- S.S. STAINLESS STEEL
- S/N SOLID NEUTRAL
- TYP TYPICAL
- UL UNDERWRITERS LABORATORY
- UNO UNLESS NOTED OTHERWISE
- V VOLTS
- VA VOLT-AMPS
- W WATTS
- W WIRE
- W/ WITH
- WP WEATHERPROOF
- XFMR TRANSFORMER

ALTERNATE #2:
SEE PLAN FOR CLARIFICATION OF BASE BID & ALTERNATE BID WORK.



(F) ELECTRICAL POWER RISER DIAGRAM
NO SCALE

FEEDER SCHEDULE

ID	FEEDER AMPS	CONDUIT AND FEEDER	FEEDING THESE DEVICES
400D.A	400	3"C, 3#500kcmil, #3G	CAMLOCK BOX 1, CAMLOCK BOX 2
400U	400	3"C, 3#500kcmil, #500kcmil N	PANEL1, PANEL2

SIZING METHOD: COPPER; 60°C: 100A OR LESS AND #12 THROUGH #1; 75°C: OVER 100A AND #1/0 & LARGER

PANEL1

WARNING

Maximum Available Fault Current:
8,187 Symmetrical RMS Amperes
Date Calculated: 11/05/2025

Based on:

- Utility Transformer: 300 kVA (Maximum)
- Utility Transformer: 4.0% Impedance (Minimum)
- Service Feeder: #500KCMIL (Maximum) Copper
- Service Feeder Length: 155' (Minimum)

PANEL2

WARNING

Maximum Available Fault Current:
7,699 Symmetrical RMS Amperes
Date Calculated: 11/05/2025

Based on:

- Utility Transformer: 300 kVA (Maximum)
- Utility Transformer: 4.0% Impedance (Minimum)
- Service Feeder: #500KCMIL (Maximum) Copper
- Service Feeder Length: 251' (Minimum)

(G) FAULT CURRENT LABELS FOR SERVICE EQUIPMENT
NO SCALE

WARNING

Arc Flash and Shock Hazard.
Appropriate PPE Required.
Failure to Comply Can Result in Death or Injury.
Refer to NFPA 70 E.

(H) GENERIC ARC FLASH LABEL FOR ALL ELECTRICAL EQUIPMENT
NO SCALE

ISSUED BY: []
 DATE: []
 DESCRIPTION: []
 REV: []
 NORTH CAROLINA STATE PORTS AUTHORITY
 DEPARTMENT OF ENGINEERING AND MAINTENANCE
 PO BOX 8002
 WILMINGTON, NC 28402
 MARK A. CLARROCCA, P.E., P of ENGINEERING
 DESIGNED BY: MAC
 DRAWN BY: JEG
 CHECKED BY: MAC
 PROJ. MGR: KB
 PORT OF WILMINGTON
 Project # 10708
 Contract # C-1803
 Sheet : E1
 Sheet Size : 24 x 36
 ELECTRICAL NOTES, DETAILS

